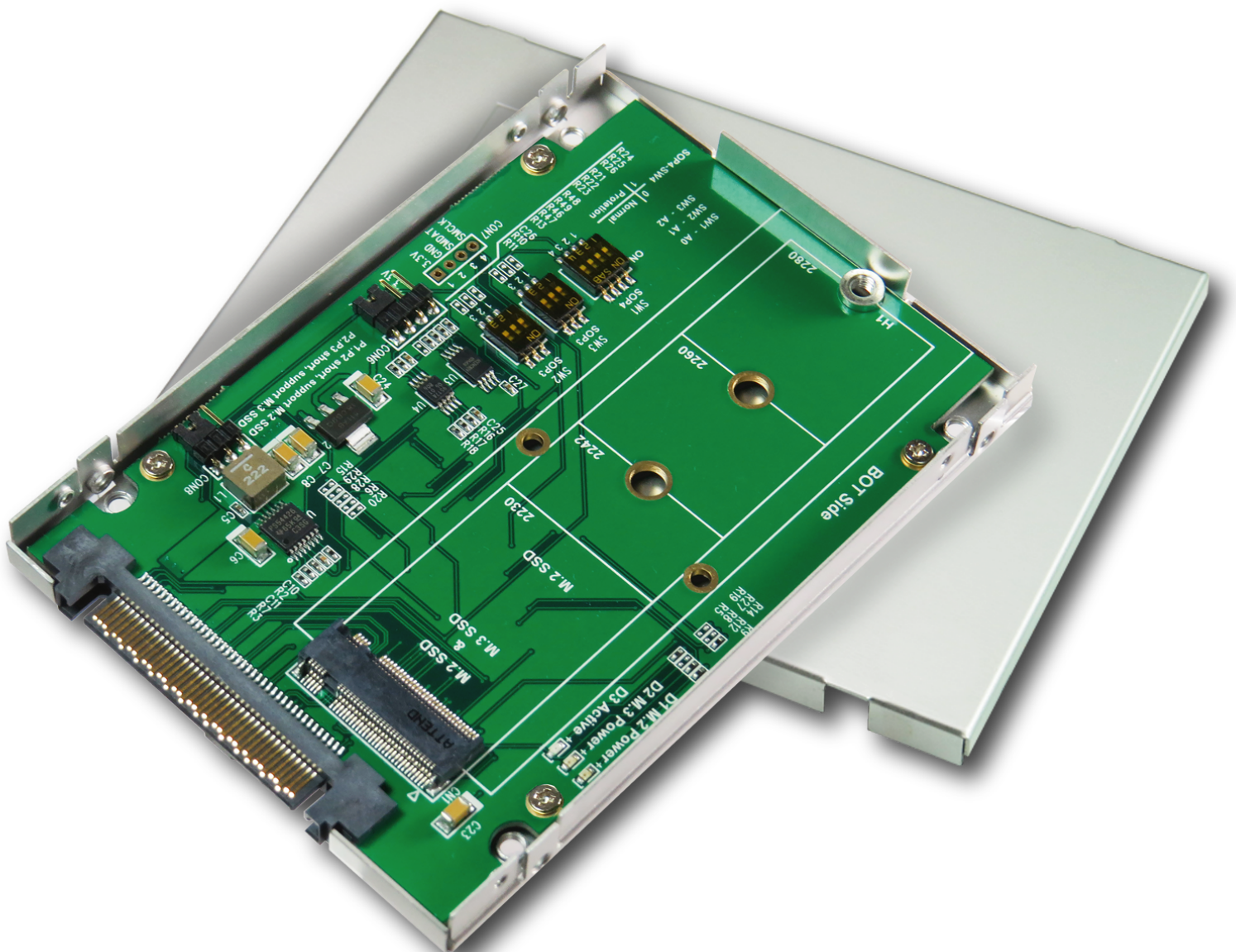


Innocard

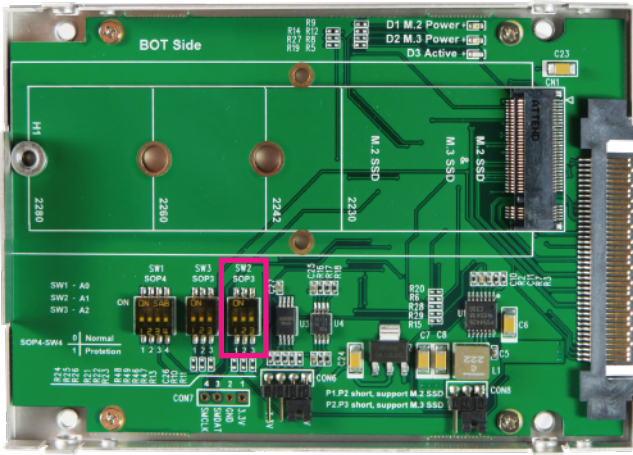
# Minerva

## PU424F

U.3 (SFF-8639) to M.2 NVMe SSD Adapter with 2.5" Enclosure



## U.3 (SFF-8639) to M.2 NVMe SSD Adapter with 2.5" Enclosure



### SW2 SETUP - DEVICE TYPE ENCODING

POS1	POS2	POS3	
PRSENT#	IfDet2#	IfDet#	
P10 pin	E6 pin	P4 pin	Device Type Installed
Gnd	Open	Gnd	SAS / SATA
Gnd	Open	Open	NVMe - (PCIe-HDD device)
Open	Open	Gnd	Quad PCIe(U.2)
Open	Open	Open	Bay Empty
Open	Gnd	Gnd	SFF-TA-1001 PCIe(U.3)
Open	Gnd	Open	Gen-Z

### Features

- ※ M.2 NVMe to U.3(SFF-8639) convert
- ※ Build in SFF-8639 connector, pin-out defined by PCIe
- ※ PWM synchronous buck converter Power for M.2 SSD
  - ◆ 4A maximum output current
  - ◆ Short circuit protection
  - ◆ In-rush current suppression
  - ◆ Thermal shutdown protection
  - ◆ ESD HBM (Human Body Mode)/2KV
- ※ Supports CLKREQ#, WAKE#
- ※ Supports M.2 /1.8V to 3.3V SMB\_CLK, SMB\_DATA Level Shift
- ※ Supports M.2 /1.8V to 3.3V SMB\_CLK, SMB\_DATA isolated
- ※ Build in SMBUS EEPROM 64KB
- ※ D1 Green LED on indicates M.2 NVMe SSD power ready
- ※ D3 RED LED Blinking indicates M.2 active status

### Specifications

- ※ Compliant with NVM Express 1.2
- ※ Support PCI Express Base Specification Rev 3.1
- ※ Support SSD\_Form\_Factor\_Version1\_a
- ※ Compliant with PCI Express M.2 Specification Version 1.0
- ※ Compliant with PCIe\_SFF-8639\_R3.0\_V1.0
- ※ Compliant with SFF-TA-1001 Rev1.1

### Support M.2(NGFF) SSD Form factor :

- ※ Type 2242-D2-B-M: 42mm(L) x 22mm(W)
- ※ Type 2260-D2-B-M: 60mm(L) x 22mm(W)
- ※ Type 2280-D2-B-M: 80mm(L) x 22mm(W)